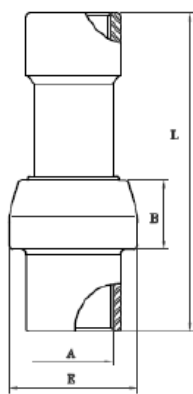


**GIUNTI DIELETTICI A SALDARE PN10**  
***PN10 DIELECTRIC JOINTS TO BE WELDED***

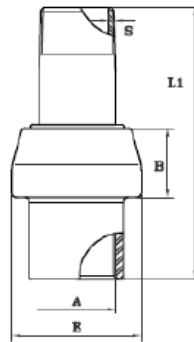


## GIUNTI ISOLANTI PER UTENZE GAS E ACQUA - PN10

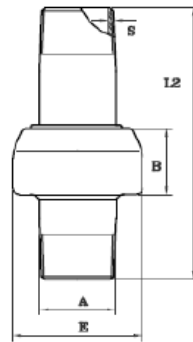
<b>Temperatura di esercizio</b>	<b>Resistenza isolamento in aria</b>	<b>Tensione isolamento in aria</b>	<b>Pressione di collaudo</b>	<b>Pressione di esercizio</b>
-10°C+70°C	5 Mohm	3.0 KV	15kg/cm <sup>2</sup>	10kg/cm <sup>2</sup>



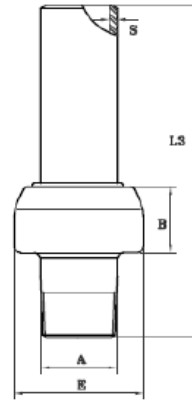
FF-FEMMINA FEMMINA



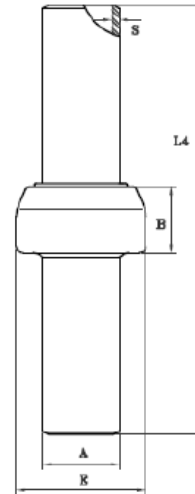
MF-MASCHIO FEMMINA



MM-MASCHIO MASCHIO



MS-MASCHIO SALDARE





SS-SALDARE SALDARE

- Tronchetto forgiato in acciaio API-5L gr.B o equivalente
- Bicchiere forgiato in acciaio ASTM A 105 o equivalente
- Estremità filettate: ISO7/EN10226-1

Tabella dimensionale prodotti classe PN10 (unità di misura millimetri)

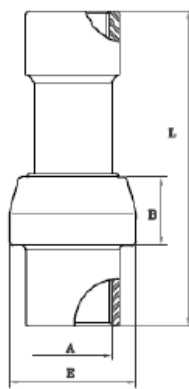
DN	A	B	E	L	L1	L2	L3	L4
1/2"	21,3	46	28	135	100	100	155	210
3/4"	26,7	53	30	142	110	110	170	225
1"	33,4	60	32	165	120	120	183	245
1" 1/4	42,2	71	35	175	135	135	203	270
1" 1/2	48,3	77	37	180	145	145	215	280
2"	60,3	90	38	-	150	150	225	290
2" 1/2	76,1	113	53	-	170	170	255	330
3"	88,9	127	56	-	200	200	300	400
4"	114,3	156	65	-	200	200	330	-

Certificati rilasciati: EN 10204 3.1 e conformità CE

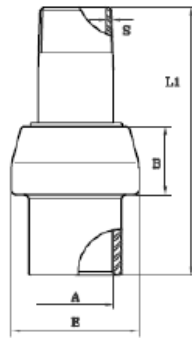
 	<b>GIUNTO ISOLANTE</b>	
	II 2 GD Zone 1 e 21 d T5 Technical file : A01-MS Technical File : A01-MS	Anno: 2011

## MONOLITHIC INSULATING JOINTS Class PN10 specification

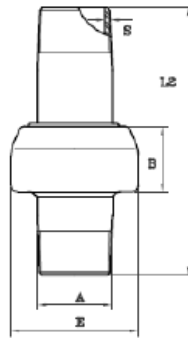
<b>Working Temperature</b>	<b>Electric insulation</b>	<b>Dielectric resistance</b>	<b>Testing pressure</b>	<b>Working pressure</b>
-10°C+70°C	5 Mohm	3.0 KV	15kg/cm <sup>2</sup>	10kg/cm <sup>2</sup>



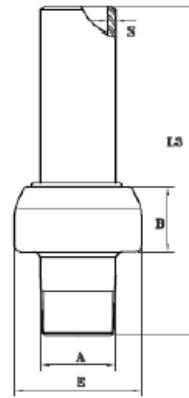
FF-FEMALE FEMALE



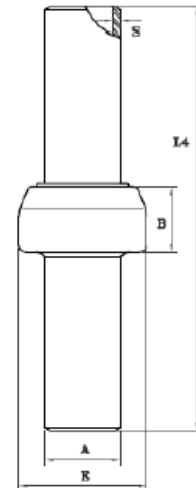
MF-MALE FEMALE



MM-MALE MALE



MS-MALE WELD





WW-WELD/WELD

- Central body steel material : Steel ASTM A 105 or equivalent
- Ends to be welded : API 5L/EN 10208-2 or equivalent
- Thread ends: ISO7/EN10226-1
- Bevel = 30° +5/-0°

ND	A	E	B	L	L1	L2	L3	L4
1/2"	21.3	46	28	135	100	100	155	210
3/4"	26.7	53	30	142	110	110	170	225
1"	33.4	60	32	165	120	120	183	245
1" 1/4	42.2	71	35	175	135	135	203	270
1" 1/2	48.3	77	37	180	145	145	215	280
2"	60.3	90	38	-	150	150	225	290
2" 1/2	76.1	113	53	-	170	170	255	330
3"	88.9	127	56	-	200	200	300	400
4"	114.3	156	65	-	200	200	330	-

NB: The dimensions reported in the table are in millimeters (mM)

**Certificates issued:** EN 10204 3.1 and CE compliance

 	<b>INSULATION JOINT</b>	
	II 2 GD Zone 1 e 21 d T5 Technical file : A01-MS Technical File : A01-MS	Year: 2011



**PEGORARO®**

*We energize  
people*

**Per informazioni/For information**

*PEGORARO GAS TECHNOLOGIES Srl*

*Via Meucci n. 77 – 36057 Arcugnano (VI) Italy*

*Phone +39 0444 289382*

*[www.pegorarogas.com](http://www.pegorarogas.com)*

*[info@pegorarogas.com](mailto:info@pegorarogas.com)*

*Export dept*

*[export@pegorarogas.com](mailto:export@pegorarogas.com)*