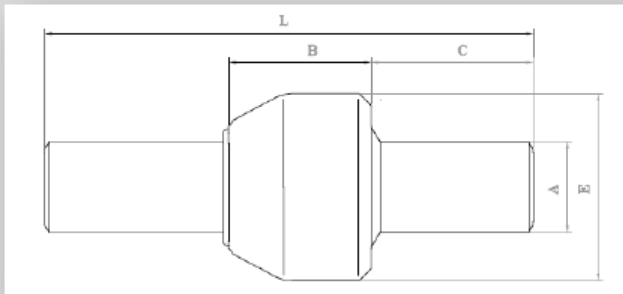


**GIUNTI DIELETTICI A SALDARE ANSI150**  
***ANSI150 DIELECTRIC JOINTS TO BE WELDED***



## GIUNTI ISOLANTI PER CONDOTTE PN25 (ANSI 150)

<b>Temperatura di esercizio</b>	<b>Resistenza di isolamento in aria</b>	<b>Tensione di isolamento in aria</b>	<b>Pressione di collaudo</b>	<b>Pressione di esercizio</b>
-10°C+70°C	5 Mohm	3.0 KV	38kg/cm <sup>2</sup>	25kg/cm <sup>2</sup>





- Acciaio API-5L gr.B ASTM A 105 o equivalente
- Guarnizione isolante NBR nitrile/butadiene
- Distanziatori isolanti in policarbonato
- Rivestimento interno in resina epossidica

Tabella dimensionale prodotti PN25 (unità di misura millimetri)

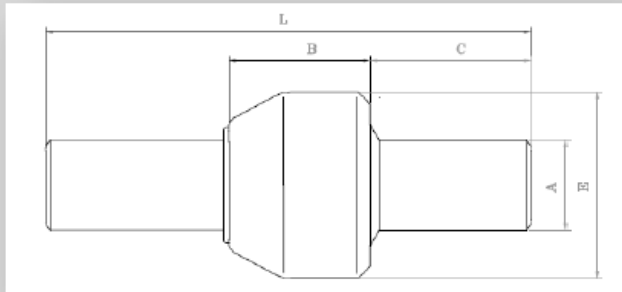
Codice Prodotto	DN	A	E	C	B	L	Peso (in Kg)
P015	1/2"	21,3	50	97	36	230	0,8
P020	3/4"	26,7	55	96	38	230	1
P025	1"	33,4	63	104	42	250	1,2
P032	1" 1/4	42,2	74	117	46	280	1,7
P040	1" 1/2	48,3	80	121	48	290	2,1
P050	2"	60,3	95	125	50	300	2,8
P065	2" 1/2	76,1	114	139	52	330	4,5
P080	3"	88,9	127	172	56	400	6
P100	4"	114,3	153	168	64	400	9
P125	5"	141,3	192	213	74	500	14
P150	6"	168,3	219	210	80	500	20
P200	8"	219,1	273	205	90	500	30
P250	10"	273,0	340	290	120	700	57
P300	12"	323,9	398	283	134	700	65

Certificati rilasciati: EN 10204 3.1 e conformità CE

 	<b>GIUNTO ISOLANTE</b>	
	II 2 GD Zone 1 e 21 d T5 Technical file : A01-MS Technical File : A01-MS	Anno: 2011

## MONOLITHIC INSULATING JOINTS Class 150 specification

<b>Working temperature</b>	<b>Electrical insulation resistance in dry air</b>	<b>Dielectric resistance in dry air</b>	<b>Testing pressure</b>	<b>Working pressure</b>
-10°C+70°C	5 Mohm	3.0 KV	38kg/cm <sup>2</sup>	25kg/cm <sup>2</sup>





- Spigot: pipe API 5L gr.B seamless or equivalent
- Hot forged steel bell: ASTM A 105 or equivalent
- Insulating steel gasket: NBR-nitrile/butan
- Insulating spacers: polycarbonate
- Internal lining: epoxy resin

Product code	ND	A	E	C	B	L	Weight (in Kg)
P015	1/2"	21.3	50	97	36	230	0.8
P020	3/4"	26.7	55	96	38	230	1
P025	1"	33.4	63	104	42	250	1.2
P032	1" 1/4	42.2	74	117	46	280	1.7
P040	1" 1/2	48.3	80	121	48	290	2.1
P050	2"	60.3	95	125	50	300	2.8
P065	2" 1/2	76.1	114	139	52	330	4.5
P080	3"	88.9	127	172	56	400	6
P100	4"	114.3	153	168	64	400	9
P125	5"	141.3	192	213	74	500	14
P150	6"	168.3	219	210	80	500	20
P200	8"	219.1	273	205	90	500	30
P250	10"	273.0	340	290	120	700	57
P300	12"	323.9	398	283	134	700	65

NB: The dimensions reported in the table are in millimeters (mM)

Certificates issued: EN 10204 3.1 and CE compliance

 	<b>INSULATION JOINT</b>	
	II 2 GD Zone 1 e 21 d T5 Technical file : A01-MS Technical File : A01-MS	Year: 2011



**PEGORARO®**

*We energize  
people*

**Per informazioni/For information**

*PEGORARO GAS TECHNOLOGIES Srl*

*Via Meucci n. 77 – 36057 Arcugnano (VI) Italy*

*Phone +39 0444 289382*

*[www.pegorarogas.com](http://www.pegorarogas.com)*

*[info@pegorarogas.com](mailto:info@pegorarogas.com)*

*Export dept*

*[export@pegorarogas.com](mailto:export@pegorarogas.com)*